



Proving Ground Map

Brownfield: 686' (209.1m) ~
Camelback: 375' (114.3m) *
Creek: 505' (153.9m) -
Dead End: 185' (56.4m) -
Gully: 254' (77.4m) **
Hardwood: 409' (124.7m) -
Lake: 950' (289.6m) -
Main: 2060' (627.9m) ~
Pine: 792' (241.4m) ~
Powerline: 2112' (643.7m) ~
Ridge: 1592' (485.2m) *
Swamp: 898' (273.6m) -

Trail Difficulty

~ Easy
- Average
* Hard
** Very Difficult



The CAVS Proving Ground is a center-wide resource for development and testing of vehicular technology, including advanced materials, unmanned aerial systems, automated vehicles, and mobility characterization.

55 acres
rugged, off-road terrain/rocks/tall grass/wooded trails/lowlands

2+ miles
12 trails with varying difficulty and terrain types

**For more information,
contact:**

SARA FULLER
CENTER FOR ADVANCED VEHICULAR SYSTEMS
200 RESEARCH BLVD
STARKVILLE, MS 39759
SFULLER@CAVS.MSSTATE.EDU



Proving Ground Features



Legend

brwn_sl_cl.tif

<VALUE>

- 0 - 2%
- 2 - 4%
- 4 - 6%
- 6 - 10%
- 10 - 15%
- 15 - 30%
- 30 - 60%
- Slope > 60%

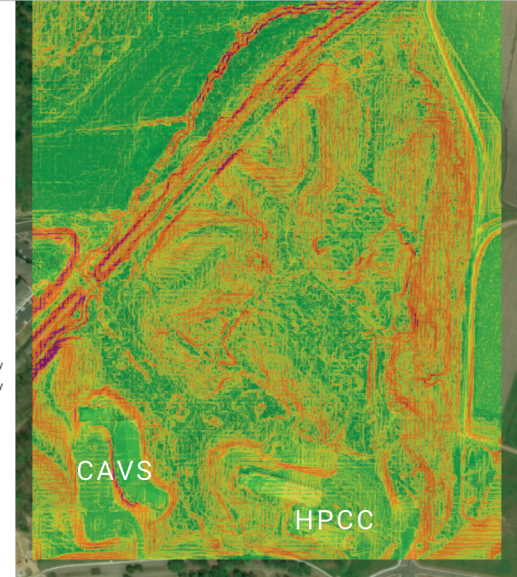
World Imagery

Low Resolution 15m Imagery

High Resolution 60cm Imagery

High Resolution 30cm Imagery

Citations



The Proving Ground boasts a variety of terrain, including 50%-60% slopes, low lying swampy areas, and deep ravines.



In addition to the diverse terrain, the Proving Ground provides access to water crossings, areas of thick vegetation, and naturally occurring obstacles.

