

WELCOME TO ROAD 2018

THE ROUNDTABLE ON THE PURPOSE OF AUTONOMOUS DRIVING

DAY 1

TUESDAY, MAY 29, 2018

- 9:00** **REGISTRATION** *Foyer of The Mill Conference Center*
- 9:20** **WELCOME** *The Mississippian Ballroom B*
- 9:50** **KEYNOTE: ANN SCHLENKER** *The Mississippian Ballroom B*
- 10:15** **KEYNOTE: SANFORD RUSSELL** *The Mississippian Ballroom B*
- 10:40** **BREAK** *The Mississippian Ballroom A*
- 10:50** **KEYNOTE: CLAY WALDEN** *The Mississippian Ballroom B*
- 11:20** **LUNCH; SPEAKER: ART SPRATLIN** *The Mississippian Ballroom B*
- 12:20** **INTRO TO BREAKOUT SESSIONS** *The Mississippian Ballroom B*
- 12:30** **ROUND 1 BREAKOUT SESSIONS**
- 14:00** **BREAK** *The Mississippian Ballroom A*
- 14:15** **ROUND 2 BREAKOUT SESSIONS**
- 15:45** **BREAK** *The Mississippian Ballroom A*
- 16:00** **ROUND 3 BREAKOUT SESSIONS**
- 17:30** **BREAK** *The Mississippian Ballroom A*
- 18:30** **DINNER AND RECEPTION** *Old Waverly Golf Club in West Point, MS ****

*** transportation will be provided

DAY 2

WEDNESDAY, MAY 30, 2018

- 9:00** **WELCOME** *The Mississippian Ballroom B*
- 9:15** **ROUND 4 BREAKOUT SESSIONS**
- 10:45** **BREAK** *The Mississippian Ballroom A*
- 11:00** **ROUND 5 BREAKOUT SESSIONS**
- 12:30** **LUNCH; SPEAKER: MIMMO PARISI** *The Mississippian Ballroom B*
- 13:30** **PANEL DISCUSSION** *The Mississippian Ballroom B*
- 14:30** **WRAP UP** *The Mississippian Ballroom B*
- 15:00** **CLOSING** *The Mississippian Ballroom B*
- 16:00** **ULYSSES S. GRANT PRESIDENTIAL LIBRARY TOUR** *Mississippi State University ****
- 18:00** **DINNER** *Crawfish Boil at The Little Dooley in Starkville, MS --- casual dress recommended ****

*** transportation will be provided

ROAD 2018 INFO

THE ROUNDTABLE ON THE PURPOSE OF AUTONOMOUS DRIVING

FIVE W'S

BREAKOUT SESSIONS

WHO COASTAL ROOM

Round 1 - Group A; Round 2 - Group B; Round 3 - Group C; Round 4 - Group D; Round 5 - Group E

WHAT BLACK PRARIE ROOM

Round 1 - Group E; Round 2 - Group A; Round 3 - Group B; Round 4 - Group C; Round 5 - Group D

WHEN PINES ROOM

Round 1 - Group D; Round 2 - Group E; Round 3 - Group A; Round 4 - Group B; Round 5 - Group C

WHERE FOOTHILLS ROOM

Round 1 - Group C; Round 2 - Group D; Round 3 - Group E; Round 4 - Group A; Round 5 - Group B

WHY DELTA ROOM

Round 1 - Group B; Round 2 - Group C; Round 3 - Group D; Round 4 - Group E; Round 5 - Group A

SCHEDULE OF

PROVIDED TRANSPORTATION

Tuesday May 29 18:00
Wednesday May 30 15:45
Wednesday May 30 18:15

DINNER AT OLD WAVERLY *Pickup at front entrance of Courtyard Marriott Hotel*
TOUR OF LIBRARY *Pickup at front entrance of The Mill Conference Center*
CRAWFISH BOIL AT LITTLE DOOEY'S *Pickup at front entrance of Courtyard Marriott Hotel*

Sponsor exhibits and refreshments will be accessible in The Mississippian Ballroom A between Breakout Sessions.



To access The Mill's WiFi network, connect to "The Mill Open." No password is needed.



At the conclusion of the conference, a video recording of the keynote presentations, panel discussion, and wrap up session will be posted on CAVS' Youtube Channel. A link to the videos can be found at: www.cavs.msstate.edu/conferences/road2018.



ROAD 2018 SPONSORS

THE ROUNDTABLE ON THE PURPOSE OF AUTONOMOUS DRIVING

ORGANIZERS

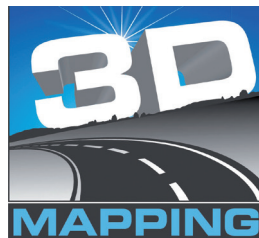


MISSISSIPPI STATE UNIVERSITY™
CENTER FOR ADVANCED
VEHICULAR SYSTEMS



SPONSORS

SEKISUI



BUTLER | SNOW

FORUM 8®



MISSISSIPPI STATE UNIVERSITY™
NATIONAL STRATEGIC PLANNING
& ANALYSIS RESEARCH CENTER

ROAD 2018 **SPEAKERS**

THE ROUNDTABLE ON THE PURPOSE OF AUTONOMOUS DRIVING

ANN SCHLENKER

ARGONNE NATIONAL LABORATORY

Ann Schlenker is the Director of Argonne's Center for Transportation Research. In this role, she leads a team of scientists and engineers conducting research and developing technologies with the goal of reducing the transportation sector's reliance on petroleum and imported oil.

Schlenker oversees engineering research to improve engine fuel efficiency and combustion processes, reduce friction losses, evaluate powertrain and vehicle architectures in virtual and experimental contexts and validate interoperability with the smart grid. She also oversees the Department of Energy's Advanced Vehicle Technology Competitions for education of the next generation of automotive engineers.

Prior to joining Argonne in 2009, Schlenker worked for Chrysler, LLC, for more than 30 years, most recently as Director of Advanced Vehicle Engineering and Alliances. She previously held a variety of engineering positions in research, regulatory development and front line product development.

SANFORD RUSSELL

NVIDIA

As Senior Director, Sanford Russell is head of NVIDIA's Autonomous Driving Ecosystem in North America. He leads the development of self-driving vehicles with NVIDIA partners, transportation startups and research institutions.

Russell joined NVIDIA in 1998 and has held a wide range of positions, starting with director of product management and including senior director of developer technology, general manager of CUDA, and senior director of alliances and marketing for GRID. Russell served as general manager of the CUDA accelerated software platform at NVIDIA which has become the compute platform for Deep Learning and AI work industrywide. Before joining NVIDIA 19 years ago, he worked at Silicon Graphics as Director of Product manager for Workstations.

Russell has a Bachelor of Science degree in marketing from the University of Massachusetts, Dartmouth.

ART SPRATLIN

BUTLER SNOW LLP

Art D. Spratlin, Jr, is the practice group leader of the Transportation and Specialized Litigation Group and the coordinator of the Butler Snow 24-Hour Accident Investigation Team and the Autonomous Vehicle Technology Group. He has extensive experience in Product Liability Law, Transportation Law/Trucking Defense, and Automotive/Recreational Vehicle Law.

CLAY WALDEN

CENTER FOR ADVANCED VEHICULAR SYSTEMS

Dr. Clay Walden serves as the Executive Director of the Center for Advanced Vehicular Systems (CAVS) and is an Associate Professor of Industrial and Systems Engineering within the Bagley College of Engineering at Mississippi State University.

Walden is a nationally recognized leader in engineering engagement and economic development having received awards from the U.S. Department of Commerce, University Economic Development Association, and the Southern Growth Policy Board. Under his leadership, CAVS has provided direct technical assistance to over 150 companies within the state. These companies have, in turn, reported over \$5.9 billion dollars in economic impact and 3,300 jobs either created or saved.

In addition, Walden has been an invited speaker at international, national, and regional conferences. This includes the Computer Assisted Engineering Forum (Tokyo), Southeastern Conference Symposium on Creativity, Innovation, and Entrepreneurship, White House Rural Forum on Innovation and Economic Development, and the White House Rural Forum on Economic Drivers in Rural America.

Walden has authored papers in the areas of technology management, manufacturing, and quality engineering. He holds a B.S., M.S., and Ph.D. in Industrial Engineering from Mississippi State University.

MIMMO PARISI

NATIONAL STRATEGIC PLANNING AND ANALYSIS RESEARCH CENTER

Dr. Mimmo Parisi is a Professor of Demography and Applied Statistics in the Department of Sociology at Mississippi State University, Director of the National Strategic Planning and Analysis Research Center (nSPARC) at MSU, and Director of the SLDS State Data Clearinghouse.

Parisi is a nationally and internationally recognized applied demographer. He represents the 21st century scholar with a focus on restructuring the role of social scientists beyond their academic pursuits to become problem solvers for public policy, economic development, and social problems that affect individuals and societies. He has created a new type of research center where scholarship plays a critical role for solving problems in education, workforce, and economic development. The center also brings together expertise that taps into the use of "big data" in the social sciences to create "smart data" that can be used for economic growth and to connect people to services that increase their ability to secure a job, build a career, or advance their education. His academic focus is on diversity and racial inclusion/exclusion at different geographies of scale (macro vs. micro segregation).

Parisi's work has appeared in top journals in his field, including Demography, Social Forces, Social Problems, Rural Sociology, and Social Science Quarterly, as well as in many technical reports, book chapters, and policy briefs.

He received his Ph.D. in Rural Sociology with a Minor in Statistics from the Pennsylvania State University.

ROAD 2018 **NOTES**

THE ROUNDTABLE ON THE PURPOSE OF AUTONOMOUS DRIVING

ROAD 2018 **VENUES**

THE ROUNDTABLE ON THE PURPOSE OF AUTONOMOUS DRIVING

OLD WAVERLY GOLF CLUB

For nearly 30 years, this idyllic, Southern club retreat has delivered an unrivaled membership experience for those fortunate enough to call it home.

Since its founding in 1988, Old Waverly has been highly regarded as one of the truly unique private clubs in all of the US. Developed on the site of the historic Waverly Mansion, the club is a result of the vision of the George and Marcia Bryan Family, who sought to create a world-class destination for golf and hospitality in the heart of the Mississippi Black Prairie.

U.S. Open winner Jerry Pate and course designer Bob Cupp were enlisted to craft the golf course from the undeveloped nature of 360 acres of pasture. The golf course opened in September 1988 to rave reviews, and has been a fixture among various “Best Of” lists, including recognition as the top residential golf course in Mississippi.

In addition to world-class golf, Old Waverly offers a host of luxurious lodging accommodations on site that provide members and their guests complete access to the club and its amenities. Nine four-bedroom cottages are available at the club for short term lodging. Villas, condos and single-family luxury homes are also available for rent and are located just steps away from the club’s amenities.

The club experience was elevated again in 2016 with the opening of Mossy Oak Golf Club, located just across the street from Old Waverly. Brought to life by Gil Hanse, architect of the 2016 Olympic Golf Course in Rio, Mossy Oak Golf has quickly become one of the most revered golf courses in all of the US and was recognized in 2018 as one of Golfweek’s Top-100 Modern Golf Courses in the US.

Offering two distinct, world-class golf courses, luxurious accommodations and unrivaled Southern Hospitality, Old Waverly has emerged as the premier golf destination in the South.



ROAD 2018 **VENUES**

THE ROUNDTABLE ON THE PURPOSE OF AUTONOMOUS DRIVING

THE MILL AT MSU

1902

In the early days of the cotton mill, people came from all over not for the high-grade fabric being produced, but to catch a glimpse of something they'd never seen in action: electricity. The lights of the mill shining each night were symbolic of what the building would come to mean to the city of Starkville: a tiny dot on the map named Boardtown that was unaware of the journey it had just begun.

1916

Few things were as important to the cotton mill and to the city as the moment J.W. Sanders decided to buy Starkville's mill and make it part of Sanders Industries. Under his guidance, the mill became one of the most successful of its kind across the country and was an economic driver in both the city and the state. The Sanders family proved to be among Mississippi's most powerful and influential groups. After over a decade of success, Sanders made the decision to expand the cotton mill and increase production to meet the booming demand for their signature "Starkville Chambray" thread. By the time expansion was complete, the mill was producing the Chambray at a rate of 1.5 million yards annually, one of the largest providers in the United States. In 1937, his campaign "What Mississippi Makes, Makes Mississippi" helped change perceptions of the growing industrial state.

1947

When World War II hit the country, demand for fabric grew to an all-time high. By the time the war concluded, the cotton mill was producing 160,000 yards of fabric per week, running 24 hours a day on three eight-hour shifts. The mill had become the center of town with its own community of houses surrounding the area, complete with a church, hospital, school, weekly meat market and even a fire station run out of the tower seen today at the front of the building.

1965

After 60 years of a mutually beneficial relationship between school and mill, Mississippi State University bought the recently-closed cotton mill and re-named it the Cooley Building, home to the school's physical plant. For decades MSU had been a pipeline of trained workers for the mill, making it fitting for the university to save the building and keep it intact for its soon-to-be-realized future.

2015

Over a century after the cotton mill first opened in Boardtown, The Mill re-opened in Starkville to once again take its place as the city's economic hub, a center of commerce and community re-shaping the town and ushering it onward just like it did 100 years before. The cotton mill then and The Mill at MSU now both represent a gateway to the university and a bridge to the community.

